

# Swivels Consultants (NZ) Ltd

## Product Catalogue

Swivel Manufacturers & Designers

**TIPPETT SWIVEL**

Ph 00649 266 0709

[www.tippettswivels.co.nz](http://www.tippettswivels.co.nz)

[tippettswivel@xtra.co.nz](mailto:tippettswivel@xtra.co.nz)



TM

# Swivel Manufacturers and Designers

Swivels Consultants NZ Ltd are manufacturers and designers of swivel fittings. Our company is family based, from the founders John and Maree Tippet, to their son Michael Tippet joining the company a few years back and gaining ownership along with his wife Louisa, who under the careful guidance of John and Maree, are moving towards growing the company to the next level. This is very much a group effort.

Although most of our products are manufactured in stainless steel, we can offer alternative materials depending on our client's requirements.

Patented and proven products for the Petroleum, Aviation, Chemical, Fire Fighting, Marine, Agriculture, Foods and Bitumen Industries, using high/low temperature, variety of fluids, with high to low pressure swivels. We use stock seals and components, so maintenance or waiting for parts is never a problem.

What makes our Swivels different is our compact design resulting in no restriction of flow with no circlips or snap rings, as well as being very robust in the design.

We have recently have received certification that our Swivels are 'Food Grade' as follows – Certification from AsureQuality – H3968 - 'Food Grade' Swivels – for use in food / beverage / dairy farm / transport / factory sanitary area. This is great and assures our Customers that our Swivels are of the highest standard and safety for their requirements in the areas achieved.

Being the manufacturer and designer enables Swivels Consultants NZ Ltd to find the best ideal Solution for your specific needs. Come to us with your query and we will offer a solution.

## Swivels for all uses:

- **96% Laminar flow rate**
- **Minimal restrictions on flow**
- **Compact design**
- **1 year full replacement warranty**
- **25 year history**

Call us to discuss your requirements:

Swivels Consultants NZ Ltd  
Unit 69, 18 Lambie Drive  
Manukau  
Auckland 2105

Ph: 09 266 0709

Em: [tippettswivel@xtra.co.nz](mailto:tippettswivel@xtra.co.nz)

Wb: <http://www.tippettswivels.co.nz/>



# Light Series – Straight

## Benefits:

- Custom size available
- Strong body
- Short and long body versions
- Stainless Steel construction
- Clean internal body
- No intrusions to upset flow
- Same size through body
- In use for 25+ years
- Different sizes for different situations
- Variety of end pieces as required
- Easy to service
- Internal bearings to keep stress of seals – longer life
- No snap rings or circlips to break



Weight is a crucial factor for some Customers – our 2.5" BSP Swivel weights only 2kg and manufactured in Stainless Steel is able to handle most substances. The ¾" is only 0.5kg in weight.

CODE	SIZE	LENGTH	BODY DIAM	STANDARD PRESSURE	
				psi	kPa
050SSLSTR	0.5"	75mm	40mm	250	1723
075SSLSTR	0.75"	75mm	40mm	250	1723
100SSLSTR	1.00"	85mm	45mm	250	1723
125SSLSTR	1.25"	110mm	51mm	250	1723
150SSLSTR	1.50"	110mm	55mm	250	1723
200SSLSTR	2.0"	120mm	80mm	250	1723
250SSLSTR	2.5"	130mm	100mm	250	1723
300SSLSTR	3.0"	140mm	120mm	250	1723

Material: 316 Stainless, PTFE, PP, Mild Steel  
Seals: Depending on requirements  
Connection Type: Female, Male, Flange  
Thread: BSPP, NT, JC, M, BW  
Temperature: Depending on requirements

# Heavy Series – Straight

## Benefits:

- Custom size available
- Strong body
- Short and long body versions
- Stainless Steel construction
- Clean internal body
- No intrusions to upset flow
- Same size through body
- In use for 25+ years
- Different sizes for different situations
- Variety of end pieces as required
- Easy to service
- Internal bearings to keep stress of seals – longer life
- No snap rings or circlips to break
- Heavy duty version for heavy use



CODE	SIZE	LENGTH	BODY DIAM	STANDARD PRESSURE	
				psi	kPa
050SSSTR	0.5"	80mm	57mm	250	1723
075SSSTR	0.75"	80mm	57mm	250	1723
100SSSTR	1.00"	90mm	65mm	250	1723
125SSSTR	1.25"	112mm	90mm	250	1723
150SSSTR	1.50"	112mm	90mm	250	1723
200SSSTR	2.0"	120mm	95mm	250	1723
250SSSTR	2.5"	130mm	130mm	250	1723
300SSSTR	3.0"	150mm	150mm	250	1723

Material: 316 Stainless, PTFE, PP, Mild Steel  
 Seals: Depending on requirements  
 Connection Type: Female, Male, Flange  
 Thread: BSPP, NT, JC, M, BW  
 Temperature: Depending on requirements

# M & F Swivel

## Benefits:

- Custom size available
- Strong body
- Short and long body versions
- Stainless Steel construction
- Clean internal body
- No intrusions to upset flow
- Same size through body
- In use for 25+ years
- Different sizes for different situations
- Variety of end pieces as required
- Easy to service
- Internal bearings to keep stress of seals – longer life
- No snap rings or circlips to break



CODE	SIZE	LENGTH	BODY DIAM	STANDARD PRESSURE	
				psi	kPa
050SSM/F	0.5"	80mm	57mm	250	1723
075SSM/F	0.75"	80mm	57mm	250	1723
100SSM/F	1.00"	90mm	65mm	250	1723
125SSM/F	1.25"	112mm	90mm	250	1723
150SSM/F	1.50"	112mm	90mm	250	1723
200SSM/F	2.0"	120mm	95mm	250	1723
250SSM/F	2.5"	130mm	130mm	250	1723
300SSM/F	3.0"	150mm	150mm	250	1723

Material: 316 Stainless, PTFE, PP, Mild Steel  
Seals: Depending on requirements  
Connection Type: Female, Male, Flange  
Thread: BSPP, NT, JC, M, BW  
Temperature: Depending on requirements

# Right Angle Swivel

## Benefits:

- Custom size available
- Strong body
- Short body
- Stainless Steel construction
- Clean internal body
- No intrusions to upset flow
- Same size through body
- In use for 25+ years
- Different sizes for different situations
- Variety of end pieces as required
- Easy to service
- Internal bearings to keep stress of seals – longer life
- No snap rings or circlips to break
- 96% Flow rate



CODE	SIZE	LENGTH	BODY DIAM	STANDARD PRESSURE	
				psi	kPa
050SSRA	0.5"	91mm	57mm	250	1723
075SSRA	0.75"	98mm	57mm	250	1723
100SSRA	1.00"	105mm	76mm	250	1723
125SSRA	1.25"	136mm	95mm	250	1723
150SSRA	1.50"	136mm	95mm	250	1723
200SSRA	2.0"	140mm	95mm	250	1723

Material: 316 Stainless, PTFE, PP, Mild Steel  
Seals: Depending on requirements  
Connection Type: Female, Male, Flange  
Thread: BSPP, NT, JC, M, BW  
Temperature: Depending on requirements

# Z Swivel

## Benefits:

- Custom size available
- Strong body
- Stainless Steel construction
- Clean internal body
- No intrusions to upset flow
- Same size through body
- In use for 6+ years
- Different sizes for different situations
- Different end pieces as required
- Full multiple-plane movement (2 or 3 directions)
- Internal bearings to keep stress of seals – longer life
- No snap rings or circlips to break
- Tested to 250 psi, 100,000 movements and 25KN pull apart test
- ZVA threads as required



### STAINLESS STEEL

SIZE	THREADS INT/EXT	NO. SWIVELS	CODE
075	3/4" BSM / 34/1.5	1	075BSPM34Z1
075	3/4" BSPF / 34/1.5	2	075BSPF34Z2
1	1" BSPM / 42/1.5	1	100BSPM42Z1
1	1" BSPF / 42/1.5	2	100BSPF42Z2
1	42/1.125 / 1" spanloc	3	125BSPAN42Z3
1.25	1.25 BSPF / 54/1.5	3	125BSPF54Z3
1.25	1.25 BSPM / 54/1.5	3	125BSPM54Z3
1.25	54/1.5 / 1.25 spanloc	3	125SPAN54Z3
1.5	To Suit	3	150SPAN
2	To Suit	3	200SPAN
3	To Suit	3	300SPAN

Pressure: 250psi or 1723kPa  
Material: 316 Stainless, PTFE, PP, Mild Steel  
Seals: Depending on requirements  
Connection Type: Female, Male, Flange  
Thread: BSPP, NT, JC, M, BW  
Temperature: Depending on requirements



# 32ZVA & 25ZVA Heavy Duty Swivel

## GENERATION II

### The Benefits included are:

- Super strong body
- Excellent Flow Rates
- Stainless Steel construction
- Tail end to suit – ZVA or OPW
- Custom Sizes available
- Certified by Independent Company
- NZ Designed and Manufactured
- Copyright/Patent/Registered Design
- One-year return to base Warranty (as per web page)

### Product Specifications:

- Stainless Steel 316 Construction
- Investment Castings\Super Seals and Bushes – European/USA dependent on requirements
- Chrome Plated Stainless Ball Bearings
- No Snap Rings or Circlips
- Threads to suit – checked for accuracy
- All components machined on our new Hyundai WIA CNC Lathe
- Material & Test Certificates available

Dimensions:	<u>32ZVA</u>	<u>25ZVA</u>
Length	180mm	200mm
Width	50mm	50mm
Weight	5kg	5kg





# Flanges

## Benefits:

- Custom size available
- Strong body
- Short and long body versions
- Clean internal body
- No intrusions to upset flow
- Same size through body
- Different sizes for different situations
- Different end pieces as required
- Easy to service
- Internal bearings to keep stress of seals – longer life
- No snap rings or circlips to break
- 2" to 10" + Bore – Mild Steel or Stainless Steel
- 2" to 10" neck



### STAINLESS STEEL / PLASTIC / MILD STEEL

SIZE	BORE	FLANGE	LENGTH	CODE
2	50 nb	Special	52mm	200SPFLMS
2	50 nb	Table E	75mm	200EFLMS
2.5	65 nb	ASA150	105mm	250ASAFLMS
3	75 nb	Table E	75mm	300ESFLMS
3	75 nb	Table E	150mm	300ELFLMS
4	100 nb	ASA150	200mm	400ASA15FLMS
4	100 nb	ASA300	200mm	400ASA300FLSS
6	150 nb	ASA300	230mm	600ASA300FLSS

Pressure: 250psi or 1723kPa  
Material: 316 Stainless, PTFE, PP, Mild Steel  
Seals: Depending on requirements  
Connection Type: Female, Male, Flange  
Thread: BSPP, NT, JC, M, BW  
Temperature: Depending on requirements

# 3" & 4" Topfill Dairy Swivel

## Benefits:

- Custom size available
- Strong body
- Clean internal body – RA less than 1.00
- No intrusions to upset flow
- Same size through body
- Different sizes for different situations
- Easy to service
- Internal bearings to keep stress off seals – longer life
- No snap rings or circlips to break
- Dairy Swivel – food quality
- Standard Base Plate available
- Thicker base plates for older tanks
- Dust cover is available
- Proven within the dairy industry
- In use overseas
- Stainless Steel



09/04/2018 reference H3968

Swivels Consultants NZ Ltd, P O Box 23 648 Papatoetoe  
Auckland 2155 / Unit 69 18 Lambie Drive Manukau Ph 0064  
266 0709 tippettswivels@xtra.co.nz Contact Michael Tippet

Global Proficiency Ltd for AsureQuality Ltd,  
Unit 2/25 Mareno Rd, (P O Box 1335)  
Tullamarine Vic 3043, Australia +61 3 9089  
1151

Global Proficiency Ltd for AsureQuality Ltd,  
Ruakura Research Centre, Hamilton East,  
P O Box 20474 Hamilton

To whom it may concern,

#### Tippet Sanitary Swivels

- Product description: milk / fluid line swivels
- Product use: for dairy tankers, dairy factories, dairy, wineries

**"Passed AsureQuality assessment for food/ beverage/ dairy farm / transport / factory sanitary use" H3968 with conditions.** This assessment was prepared by Global Proficiency Ltd using HACCP principles to determine equivalence with food standards listed below. See <http://assessedproducts.asurequality.com/>. This supports food Risk Management Programmes & other endorsements that may apply to this product include MPI regulated farm dairy approval, MPI dairy factory endorsement, MPI regulated non-dairy animal product approvals, EPA HSNO-OSH-environment approval (& previously AQIS).

#### Conditions:

- Used per instructions, legislation, & GMP for milk / beverage / food solution direct contact in sanitary use including wash, sanitising and rinse as appropriate.
- The assessment is subject to notification of change and expires on 09/04/2023.
- The full report is attached for supplier review and verification. The assessment is activated by countersigning.

Prepared by Global Proficiency for AsureQuality Ltd by  
Bob Hutchinson PhD SENIOR DEVELOPMENT SCIENTIST

*REG Hutchinson*

Supplier: *[Signature]*

Date: *31/5/2018*

#### Scope and purpose of the assessment:

- Asurequality assessment is a non-regulated, voluntary, and evidential certification by the supplier demonstrating equivalence with food safety standards, and also that product instructions address hazards for staff & equipment. The assessment is independently confirmed, without prejudice or guarantee, using information submitted by the supplier or from other sources. Confidentiality of the product formulation is maintained using coded material identifiers in the report, and appendices containing confidential information are provided only to the supplier.
- Scope: NZ checks (FSANZ, US FDA 21 CFR/ NSF, Food Chemicals Codex, EPA NZ, EU, French culinary listings or related data for equivalent safety). NZ background (Animal Products Act, Risk Management Programmes. Detergent & Sanitiser Manufacturer's Code of Practice, Detergent & Sanitiser Standards and Analytical Methods. Quality Manual - Assessment Procedures

#### Summary of assessment with risks highlighted:

- Information and prior assessments (New AsureQuality assessment. Stainless steel has Sandvik / or similar Salzgitter Mannesmann certificates listed below).
- Food-safety (materials S/S had apparent compliance with Code NZCP1: Design & operation of farm dairies. Part 14 referring to AS 1528.1 or in common use ASTM A240M or found - AISI 300 series see table below. PTFE was listed in 21CFR for food contact see table. Other materials had no contact including EPDM which also had food listings).
- QA (Stainless steel manufacture was under ISO 9000series & other registrations are not required).
- QC of Hygienic Design Fabrication & Finish (Requirement is for swept flow, cleaning & surface finish are met per the next line of the table below).
- Unwanted effects (The design minimises disconnection by avoiding circlips etc. Production side effects are not expected per arrangements for swept flow, cleaning and surface finish).
- Efficacy (is per claim and common industry use and otherwise outside of scope of this assessment).

# Industry Solutions

Proven worldwide, call us to help you find the best solution.

At Swivels Consultants (NZ) Ltd we offer the most robust and practical solutions for our clients in a range of different applications.

Our range of standard products can be tailored specifically for your requirements, or we will design and custom built to your specifications.

## Refueling Trucks

This shows the “Z Swivel” in the holster above the reel.

- Full 360 rotation
- Straight flow through
- Only one operator
- Strong body so still works even after being run over
- Unable to rotate back on self and lock up



## Refueling Tankers

This shows the “Male/Female” swivel in a compact area.

- Full 360 rotation
- Straight flow through
- Compact size
- No drag
- Full angular support





## Marina Gantry

This shows the “right angle” swivel in a compact area.

- Full rotation
- Straight flow through
- Compact size
- Stainless steel construction
- No load on flexible pipe, no kinks on hoses giving longer life



## Bitumen Trucks

This shows the “flange” swivel in a compact area which moves up and down.

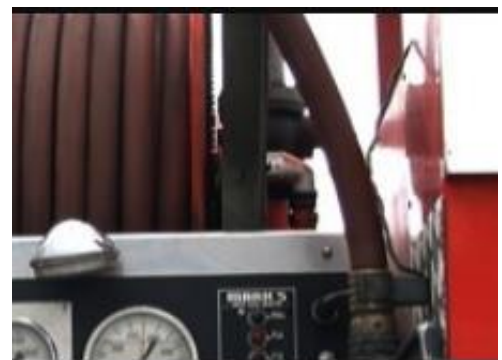
- Full 360 rotation
- Straight flow through
- Compact size
- High temperature



## Fire Trucks

This shows the “right angle” swivel in a compact area.

- Full 360 rotation
- Straight flow through
- No restriction of flow
- Compact size



## Gantry

This shows the “flange” swivel in a compact area.

- Full 360 rotation
- Straight flow through
- Compact size
- Full support of the gantry weight



## Reels

This shows the “heavy duty straight” swivel in a compact area.

- Full 360 rotation
- Straight flow through
- Compact size
- Full support of reel
- Stainless steel construction



# Fluids Used

---

## FLUIDS GOING THROUGH OUR SWIVELS

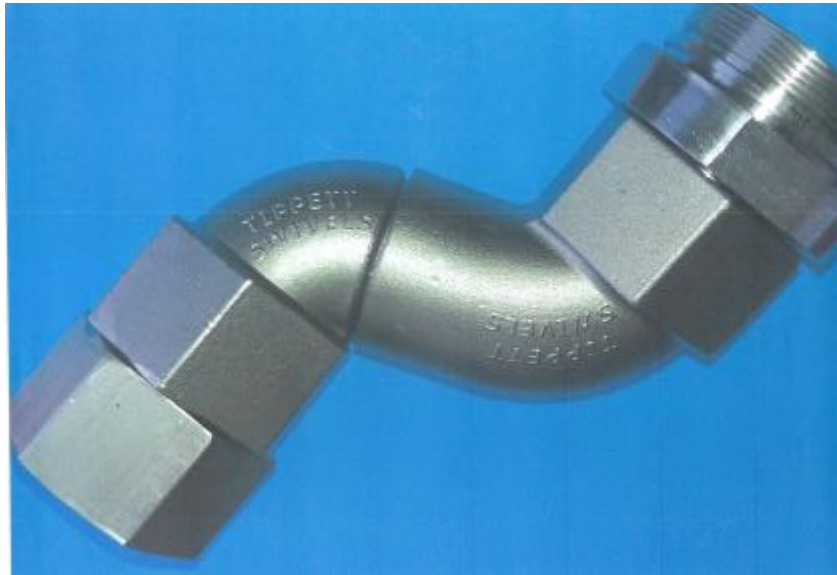
Swivels manufactured by Swivel Consultants (NZ) have been used with a wide variety of fluids and applications.

Some examples:

- OIL – In a filling situation (4-44 gal. drums filled on the 1 pallet using a combination of our 1.5" right angle and straight swivels)
- LPG
- DIESEL
- AVGAS – Aviation hose reels and dispensers
- JET A-1
- PETROL – Delivery trucks as well as petrol station dispensers
- METHANOL – Unloading and loading tankers at a wharf terminal
- ETHANOL
- WHEY – Product sprayed onto farm paddocks as fertiliser
- WATER – Fire appliances, water delivery trucks, etc.
- BITUMEN – Sparayers, hand lancers, loadout booms, etc.
- BITUMENOUS EMULSIONS
- WASTE PRODUCTS
- FOOD PRODUCTS – e.g. apple juice
- CHEMICALS – sulphuric and nitric acids
- DRILL MUD
- AIR – Vacuum and pressure
- FIRE FIGHTING – Foam guns, etc.
- OIL CONDENSATE – on oil wells



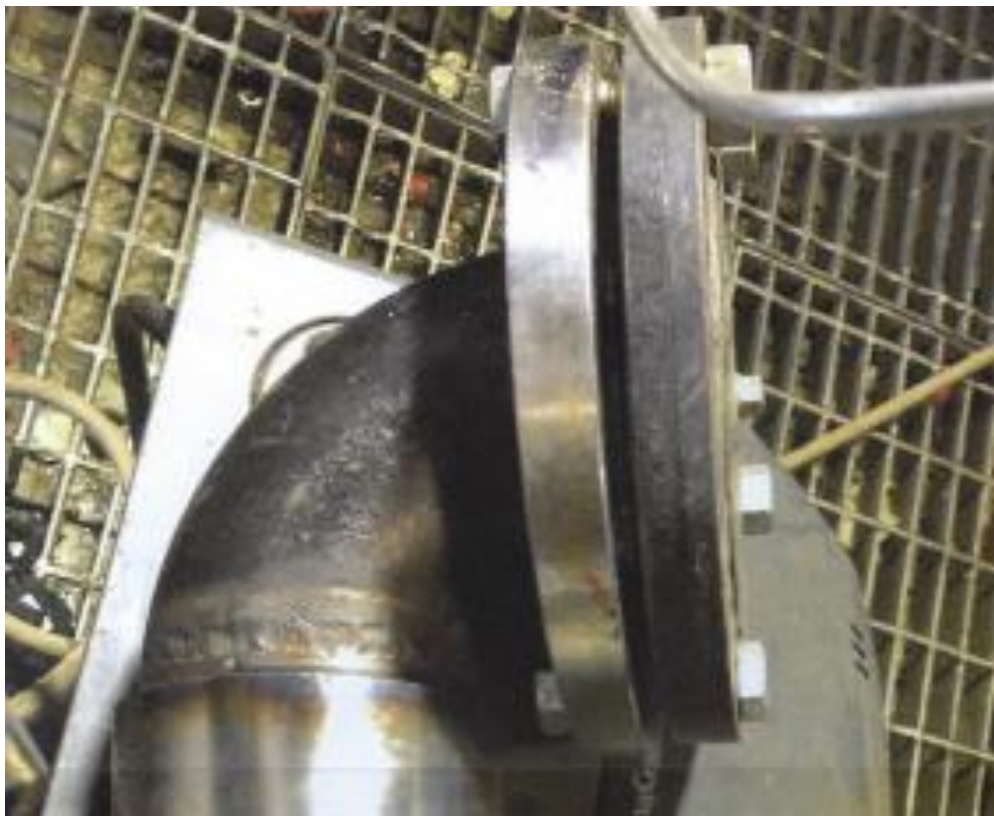
















11th September 1989

TO WHOM IT MAY CONCERN

We have been using the Tippett Rotary Union Type 220523 for a year now on our two Pointing Machines.

A pump has been pumping an oil/water cutting fluid through rotating shafts, spinning at 3000 RPM at 30 litres/min.

We estimate that we can pass 30% more coolant with the Tippett Union than we could before, using another brand of Union; and seals and bearings are lasting 70% longer.

We find the Tippett Rotary Union very satisfactory and gives us excellent service.

*THIS MACHINE IS RUNNING 24 HOURS A DAY 6 DAYS A WEEK*

*[Signature]*  
W. G. HAWKINS  
TOOLROOM SUPERVISOR

WGH/MP

A division of Siddons Industries Limited

64 9 2762261  
05-01-1989 10:40 FROM JH TIPPETT ENGINEERING

TO 004418394588

**BP Oil New Zealand Limited**  
**Aviation Fuelling Service**

*BT 15:11 5/1/89  
for John Tippett, Tippett Engineering.*

**Oil & international**

*Auckland Airport  
5th January '89*

*TO WHOM IT MAY CONCERN,*

*WE HAVE BEEN USING TIPPETT'S  
STAINLESS STEEL SWIVEL COUPLINGS ON  
LIGHT AVIATION HOSE REELS AND FUELLER  
VEHICLE OVERWING HOSE REELS FOR ABOUT  
EIGHT YEARS. WE HAVE HAD NO FAULTS  
IN THESE UNITS IN THIS TIME. THEY HAVE  
BEEN FITTED BOTH AS NEW INSTALLATIONS  
AND REPLACEMENTS FOR WORN OUT "CIRCLIP"  
TUBE SWIVELS.*

*[Signature]*  
S. KING  
Fleetman, BP Auckland Area

**EMOLEUM - NEUCHÂTEL**

7 November 1990

TO WHOM IT MAY CONCERN

I would like to introduce Michael Tippett of Swivel Consultants (NZ) Limited.

We have been using Tippett Rotary Unions on our bulk bitumen installations and various plant items which are engaged in our sealing operation.

We find the Tippett Rotary Unions very satisfactory and hold the service and professional ability of Swivel Consultants in very high regard.

Yours faithfully,  
EMOLEUM (NZ) LIMITED

*[Signature]*

D.F. Saunders  
BRANCH MANAGER

EMOLEUM (NZ) LTD

880 Great South Bay, Penrose, Auckland  
Old Launce Road, Rotorua

P.O. Box 12-062, Penrose  
P.O. Box 1042, Rotorua

Telephone (09) 349-049  
Telephone (073) 488-198

Facsimile (09) 525-1255  
Facsimile (073) 471-340



# Kiwi innovation is nothing new – it was alive and well decades ago

When 76 year old John Tippett tells you he is about to retire after more than half a century in the business, people just smile quietly. Few believe this extraordinary graduate of the School of Hard Knocks is capable of standing by and watching while others turn out the swivel fittings for which Swivel Consultants are renowned. Wife and partner Marie has been alongside him for 53 years every step of the way, operating machinery and bringing a fresh perspective to complex engineering tasks and is often called on by John and others in the industry.



*John and Marie Tippett*

Nearly 40 years ago, John Tippett made a radical decision. He bought a Czechoslovakian made TOS lathe which had been turned down by the original customer because it was metric, borrowed space from a friend, kept his day job and worked at night with Marie on "everything and anything".

"I worked on the machine until the early hours, went home for a couple of hours sleep and then off to my day job," he says.

The company grew and a couple of years later the fledgling J & M Tippett Engineering was looking for a new machine. John

went to Melbourne and came back with a \$100,000 lighter and the proud owner of a Mazak CNC lathe, reputedly the first to be put to work in a jobbing shop. A couple of years later a Micro Turn CNC lathe was added to the scheme of things. During the ensuing years, special machines and projects for various customers were completed using the CNC machines and the employees.

In 1987, a major customer failed to make payments and the domino effect sent the business down and the Tippetts back to square one.

Adversity became the mother of inven-



*Mini fuel truck hose reel*

*Floating marina fuel lines*

## Fact box

- 96 percent laminar flow rate
- Minimal restrictions on flow
- Compact design
- Able to handle most fluids
- Full certification
- 25 year history
- Seals in protected cavity with restricted fluid access and no axial loading
- Longitudinal bearing to give full support and rigidity
- Ball bearing to take thrust load only

tion and John and Marie started toying with the notion of making cast or stainless steel swivels. In those days vehicles used hoses which created a health and safety issue with limited ability to withstand back pressure.

John went back to working for wages but in the evenings the pair developed the now well known "Z" swivel. "It was a matter of trial and error – we got the first ones to swivel ok but they pinched our fingers."

It is pretty much history from there. Today Swivel Consultants NZ Ltd make a wide range of swivel fittings, mainly from stainless steel but some in mild steel.

Protected by patents, copyrights and registered designs (Aus) they are in wide use

in engineering applications in Australia, the Pacific and New Zealand.

"We use off the shelf seals and components so maintenance is no problem," says John.

Angular swivels may be more compact to fit in confined areas, such as the hose reels as used on fire appliances where space is at a premium. Both straight and angular swivels can be made to suit different applications and with different threads. Swivel joints manufactured for fluid handling, rotary and circulating hoses offer flexibility in hoses with any fluids.

"There are no internal parts or protrusions to slow the flow, no circlips and no snap rings," says John.

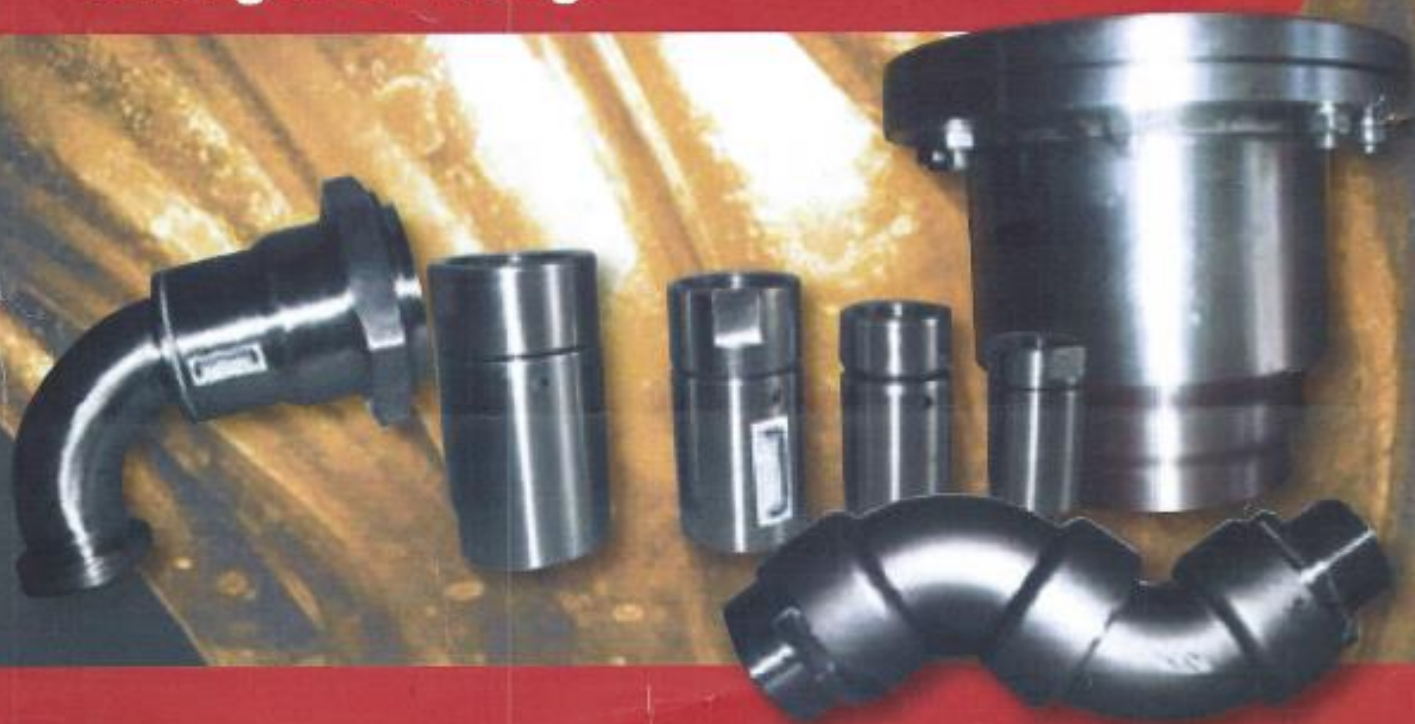




**For all your swivel needs in:**

- Aviation
- Fuel
- Chemical
- Dairy
- Rooding
- Waste water

**Made to order in angle, Z,  
straight or flange**



**[www.tippettswivels.co.nz](http://www.tippettswivels.co.nz) | +64 9 266 0709**

---

## Swivels Consultants NZ Ltd

### Terms and Conditions of Trade

To the fullest extent legally permissible all dealings between Swivels Consultants NZ Ltd and any Customer relating to any products and/or services are subject to the following terms and conditions of trade unless otherwise agreed in writing:

#### Title of Goods:

Until payment is received in full for the goods/services provided the seller and buyer agree that:

- The title for the goods/service remains with the seller until they are paid for in full – see payments section
- The buyer shall store and identify all goods supplied in such a way that it is clear that they are the property of the seller and all storage and insurance costs shall be met by the buyer
- The buyer hereby gives the seller and its agents/servants licence upon giving reasonable notice entry to their premises that are occupied by the buyer to remove any goods supplied that remain unpaid. These may be partially or wholly attached or incorporated into other goods, the seller may where practical disconnect or sever the goods in any way whatsoever as may be necessary to remove the goods without its being liable to the Customer or any person claiming through the Customer.
- If the Seller exercises his right to reclaim the goods it shall be entitled to dispose of them for its own benefit and the buyer shall indemnify the seller for:
  - Any loss in price incurred by it on realization against the price at which such goods were contracted to be bought by the buyer
  - Any costs incurred by the seller in exercise of its right to reclaim the goods whether relating to the repossession, storage or resale of the goods (including legal costs as between solicitors and own Client).
- Nothing in this clause shall be construed as permitting the buyer to return the goods or any part of these for any reason.

#### Payments:

- The Customer agrees that payment for goods supplied, including any inspection charges, freight/insurance and GST (goods and services tax), are to be made by cash, cheque, bank cheque, direct credit or internet banking and without deduction unless otherwise agreed in writing.
- GST and other taxes and duties that may be applicable shall be added to the price except when they are expressly included in the price.
- Legal and equitable title to and ownership of goods supplied shall not pass to the purchaser until payment is received in full.
- Payment is due in full on the 20<sup>th</sup> of the month following invoice unless previously arranged or stated on the invoice.
- Any expenses, costs or disbursements incurred by Swivels Consultants NZ Ltd in recovering outstanding monies, including collection agency fees or legal fees, shall be recovered from the Customer.
- Swivels Consultants NZ Ltd reserves the right to charge interest on all overdue accounts at the rate of 15% per annum.
- If before delivery there arises reasonable grounds for belief that the buyer will not be able to fulfil its payment obligations to the seller on the required date, the seller shall have the right to demand security or payment in advance of delivery. If security to the reasonable satisfaction of the seller is not offered or, if payment in advance of delivery is not made without delay, the seller may cancel the purchase.

#### Inspection and Testing

All inspections and testing relating to goods or documentation relating to such inspection and testing requested by the buyer shall be paid for by the buyer in addition to the purchase price for the goods.

#### Acceptance

Any instructions received by Swivels Consultants NZ Ltd from the Buyer for the supply of goods and/or the Buyer's acceptance of goods supplied by Swivels Consultants NZ Ltd shall constitute acceptance of the terms and conditions contained herein.

#### Customers Disclaimer

The Customer hereby disclaims any right to rescind or cancel any contract with Swivels Consultants NZ Ltd or to sue for damages or to claim any restitution arising out of any inadvertent misrepresentation made to the Customer by Swivels Consultants NZ Ltd and the Customer acknowledges that the goods are brought solely upon the Customer's skill and judgement.

---



## Defects

The Customer shall inspect the goods on delivery and shall within seven (7) days of delivery notify Swivels Consultants NZ Ltd of any alleged defect, shortage in quantity, damage or failure to comply with the description or quote. The Customer shall afford Swivels Consultants NZ Ltd an opportunity to inspect the goods within a reasonable time following delivery if the Customer believes the goods are defective in any way. If the Customer shall fail to comply with these provisions the goods shall be presumed to be free from any defect or damage. For defective goods Swivels Consultants NZ Ltd has agreed in writing that the Customer is entitled to reject Swivels Consultants NZ Ltd liability to either (at Swivels Consultants NZ Ltd discretion) replacing the goods or repairing the goods.

## Returns

Returns will only be accepted provided that:

- The Customer has complied with the instructions for correct installation and use of Swivels and in accordance with the 'defects' policy regarding returns.
- Swivels Consultants NZ Ltd has agreed in writing to accept the return of the goods and the goods are returned at the Customer's cost within seven (7) days of the delivery date.
- Swivels Consultants NZ Ltd will not be liable for goods which have not been stored or used in a proper manner.
- The goods are returned in the condition in which they were delivered and with all packaging materials, brochures and instruction material in a new condition as is reasonably possible in the circumstances.
- Swivels Consultants NZ Ltd may accept the return of the goods for credit, but this may incur a handling fee of fifteen percent (15%) of the value of the returned goods plus any freight.
- All Swivels sold from 1st August 2017 are stamped with a Job Number – if this is removed from the unit the warranty is void.

## Consumer Guarantees Act

If the Customer is acquiring goods for the purposes of a trade or business, the Customer acknowledges that the provisions of the Consumer Guarantees Act 1993 do not apply to the supply of goods by Swivels Consultants NZ Ltd to the Customer.

## General

If any provision of these terms and conditions of trade shall be invalid, void, illegal or unenforceable, the validity, existence, legality and enforceability of the remaining provisions shall not be affected, prejudiced or impaired.

These terms and conditions of trade and any contract to which they apply shall be governed by the laws of New Zealand, and are subject to the jurisdiction of the courts of New Zealand.

Swivels Consultants NZ Ltd shall be under no liability whatsoever to the Customer for any indirect and/or consequential loss and/or expense (including loss of profit) suffered by the Customer arising out of a breach by Swivels Consultants NZ Ltd of these terms and conditions of trade.

In the event of a breach of this contract by Swivels Consultants NZ Ltd, the remedies of the Customer shall be limited to damages which under no circumstances shall exceed the price of the goods.

The Customer shall not be entitled to set off against, or deduct from the price, any sums owed or claimed to be owed to the Customer by Swivels Consultants NZ Ltd, nor withhold payment of any invoice because part of that invoice is in dispute.

Swivels Consultants NZ Ltd may licence or sub-contract all or any part of its rights and obligations without the Customer's consent.

When ordering our products, it is the care of the Customer to ensure they are purchasing the correct goods for the correct use.

Swivels Consultants NZ Ltd shall not be responsible for any injury sustained by the Customer or subsequent parties, for the improper use of goods supplied that results in injury or death. The goods must be installed by the Customer or subsequent parties correctly under good Engineering Practices, or as stated in the "Instructions and Warranty" booklet supplied with each Swivel. All care is expected to be taken by the Customer to ensure they are used in the correct manner as expected by Swivels Consultants NZ Ltd. All Swivels sold from 1st August 2017 are stamped with a Job Number – if this is removed from the unit the warranty is void.